



RG65 boat and parts 2023

MS 1420 MANTA 17500.- EUR

- completed assembled fiberglass hull with 3D printed parts
- Textrem carbon foil kit
- swing rig system
- Installed and black painted 620g bulb

MS 1430 MANTA 17550.- EUR

- completed assembled carbon hull with 3D printed parts
- Textrem carbon foil kit
- swing rig system
- Installed and black painted 620g bulb



MS 1400 MANTA 17 RG 65 fiberglass hull (only hull).....180.- EUR

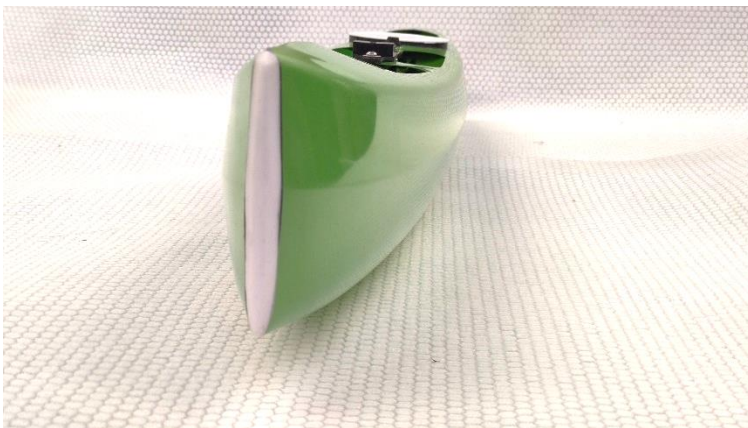
- molding the high pressure ballon technique in aluminium tool
- fiberglass hull
- 70 +/- 3g
- cnc cutout deck
- installed front
- rubber bumper
- carbon ring and pot lid 60mm
- selectable std. RAL color

MS 1401 MANTA 17 RG 65 carbon hull (only hull).....230.- EUR

- Same as the MS 1400 but carbon hull
- 65 +/- 3g

MS 1520 MANTA 2021 completed assembled fiberglass boat500.- EUR

- 3D printed parts
- textrem foil kit
- swing rig system
- installed and painted 660g bulb



MS 1530 MANTA 2021 completed assembled Carbon Boat550.- EUR

- 3D printed parts
- textrem foil kit
- swing rig system
- installed and painted 660g bull

MS 1500 MANTA 2021 RG 65 hull180.- EUR

- molding the high pressure ballon technique in ALUMINIUM tool
- fiberglass hull
- 70 +/- 3g
- cnc cutout deck
- installed front
- rubber bumper
- carbon ring and pot lid 60mm
- selectable std. RAL color

MS 1501 MANTA 2021 RG 65 hull230.- EUR

- Same as the MS 1500 but carbon hull
- 65 +/- 3g

MS 1505 MANTA 2021 rubber bumper.....8 .-EUR

- white or black

MS 1403 MANTA 17 rubber bumper.....8 .-EUR

- white or black

MS 1404 deck reinforcement.....4.- EUR

- cnc cutted carbon herex sandwich
- M3 alu glue in nuts



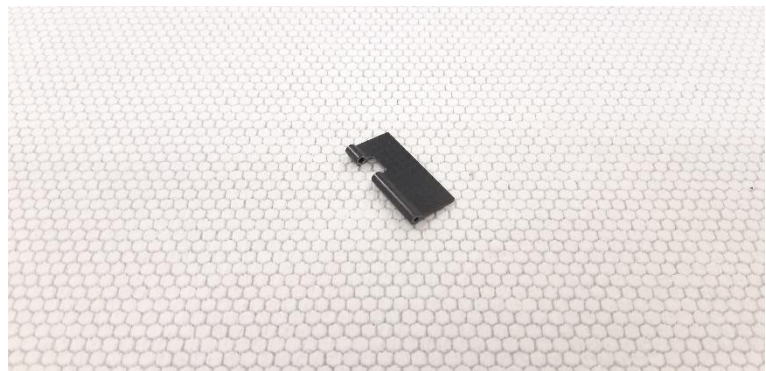
MS 1405 sail servo plate.....4.-EUR

- cnc cutted carbon herex sandwich
- fitted the MS 1017 and MS1018
- M3 alu nuts



MS 1005 carbon moulded trunking.....5.- EUR

- Length 45mm
- compatible MS 1006
- compatible MS 101



MS 1006 rudder arm.....2.- EUR



MS 1009 mast bearing holder11.-EUR

MS 1090 mast bearing holder with stainless steel bearing16.-EUR

- with ballbearing (6x10x3 flanged)
- CNC machined carbon plate
- 3D printed rig holder



MS 1014 Carbon sail servo arm8.- EUR

- CNC machined
- lenght 55mm
- fitted DF roller block



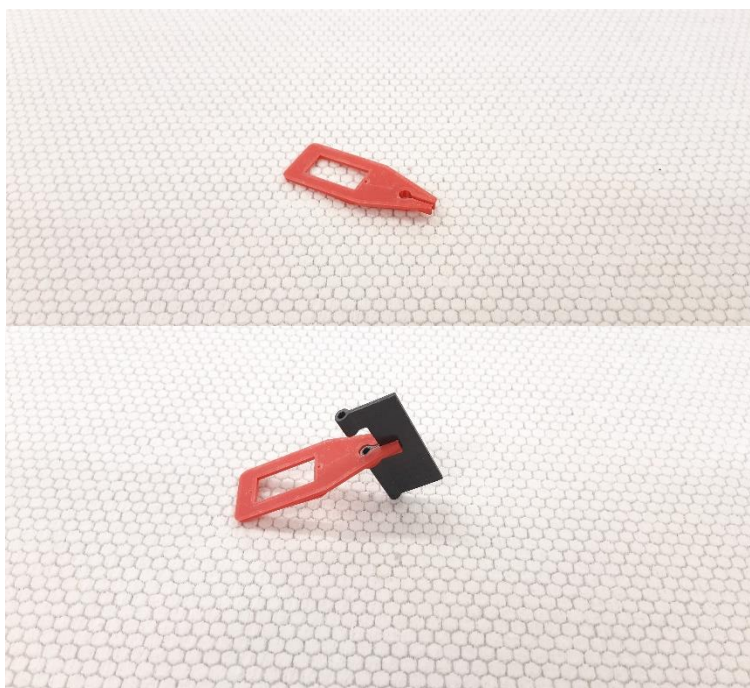
MS 1015 Dragon force roller block3.-EUR



MS 1016 3D printed rudder servo holder.....6.- EUR

Fitted by Hitec 5070
or similar servos

compatible the MS 1005 :



MS 1017 3D printed sail servo holder for normal size servo (40x20mm).....7.- EUR

MS 1018 3D printed sail servo holder for midi size servo (35x16)7.- EUR



MS 1019 3D printed main sheet post8.- EUR
- installed sliding tube inside



MS 1020 3D printed mast bracket3.- EUR



fitted to MS 2021



MS 1022 60mm carbon ring and pot lid.....10.- EUR



MS 2010 fin 3x3 mm carbon60.-EUR

Steel mold tool!!!

- High streng carbon layers
- CNC machined AIREX foam core
- stainles steel threaded rod upper (M3)
- weight: 42 (+ / - 2g)
- length: 370mm
- width: from above to down 50mm-58mm-38mm
- thicknes: above 4,5-4,7mm – down 2,8-3mm



MS 2012 fin TEXTREM edition.....75.-EUR

- lighter and stiffer version
- High modulus UD and TEXTREM carbon layers
- CNC machined AIREX foam core
- stainles steel threaded rod upper (M3)
- weight: 38g (+ / - 1g)
- length: 370mm
- width: from above to down 50mm-58mm-38mm
- thicknes: above 4,5-4,7mm – down 2,8-3mm



MS 2021 carbon fin box.....25.- EUR

- Steel mould tool
- carbon and glass fiber layer
- extra water closed layer
- weight: 12 (+/- 1g)



MS 2030 rudder 3x3 mm carbon.....25.-EUR

Steel mould tool

- high streng carbon layers
- Cnc machined airex foam core
- 3mm stainles steel shaft
- weight with shaft 12 +/- 1g
- length: 150mm
- Width: 48mm-32mm
- thickness: (upper) 3,3mm



MS 2031 rudder TEXTREM edition.....30.- EUR

- High modulus UD and TEXTREM carbon layers
- Cnc machined airex foam core
- 3mm stainles steel shaft
- weight with shaft 10 +/- 1g
- length: 150mm
- Width: 48mm-32mm
- thickness: (upper) 3,3mm



MS 2042 bulb 425g (copper core).....28.-EUR

- Pure lead
- 3mm copper core reinforcement
- weight +/-5g

MS 2052 bulb 520g (copper core).....28.-EUR

- Pure lead
- 3mm copper core reinforcement
- weight +/-5g

MS 2062 bulb 620g (copper core).....28.-EUR

- Pure lead
- 3mm copper core reinforcement
- weight +/-5g

MS 2066 bulb 660g (copper core).....28.-EUR

- Pure lead
- 3mm copper core reinforcement
- weight +/-5g

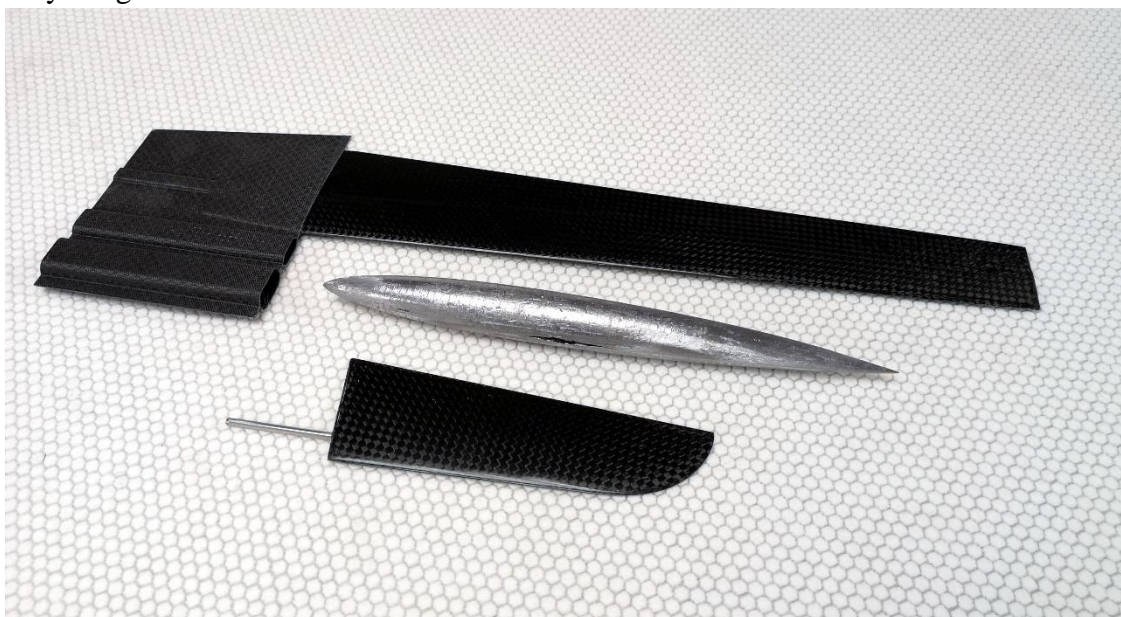
MS 2072 bulb 715g (copper core).....28.-EUR

- Pure lead
- 3mm copper core reinforcement
- weight +/-5g



MS 2100 Foil kit130.- EUR

- fin
- rudder
- fin box
- any weight bulb



MS 2101 TEXTREM edition foil kit150.- EUR

- TEXTREM fin
- TEXTREM rudder
- carbon fin box
- any weight bulb



MS 3101 Swing A sail.....38.- EUR

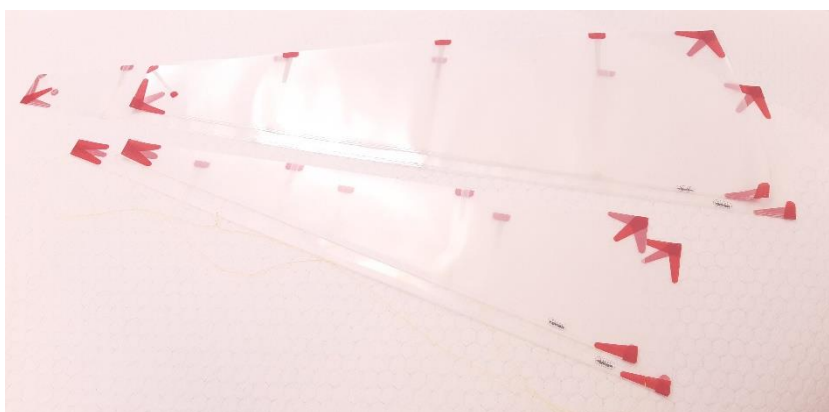
- 36 micron mylar foil

MS 3102 Swing B sail.....38.- EUR

- 50 micron mylar foil

MS 3103 Swing C sail.....38.- EUR

- 75 micron mylar foil

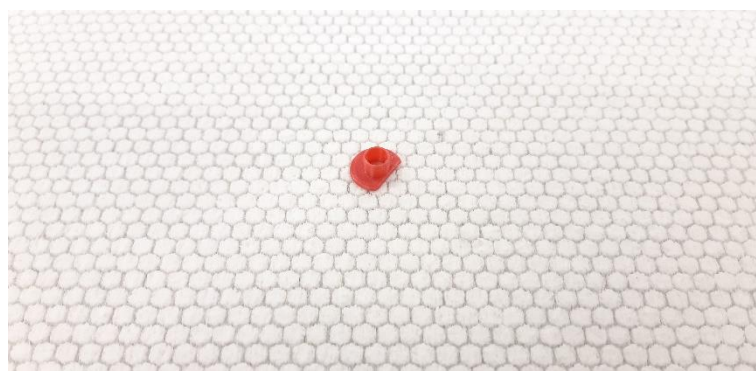


MS 3300 Swing rig boom(1 pcs.)16.-EUR

- Carbon herex sandwich
- weight: 10g
- CNC machined
- 11,5x3,5mm

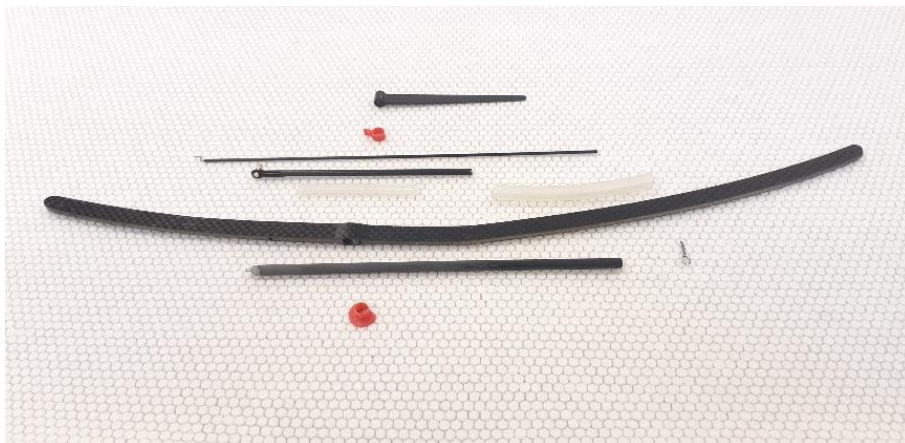


MS 3305 3D printed mast ring2.- EUR



MS 3310 A or B or C Swing rig kit, without mast and sail.....40.-EUR

- A, B, or C (same parts)
- mast band with flange (3pcs. diferent size)
- lower mast tube 6mm
- swing boom
- mast ring
- jib boom
- silicon tube
- mast crane
- main sheet ring



MS 3400 mast crane 90 mm (ø 6 mm).....5.-EUR

MS 3401 mast creane 60 mm (ø 5 mm).....5.-EUR



MS 3402 mast band with flange carbon (ø 4 mm).....4.- EUR

MS 3403 mast band with flange carbon (ø 5 mm).....4.- EUR

MS 3404 mast band with flange carbon (ø 6 mm).....4.- EUR

